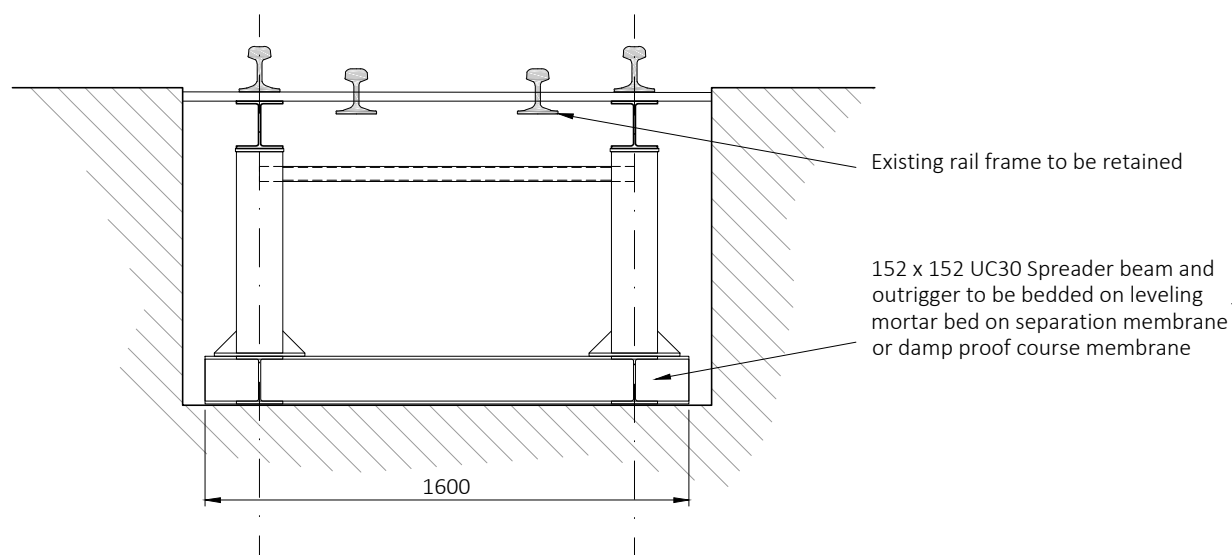
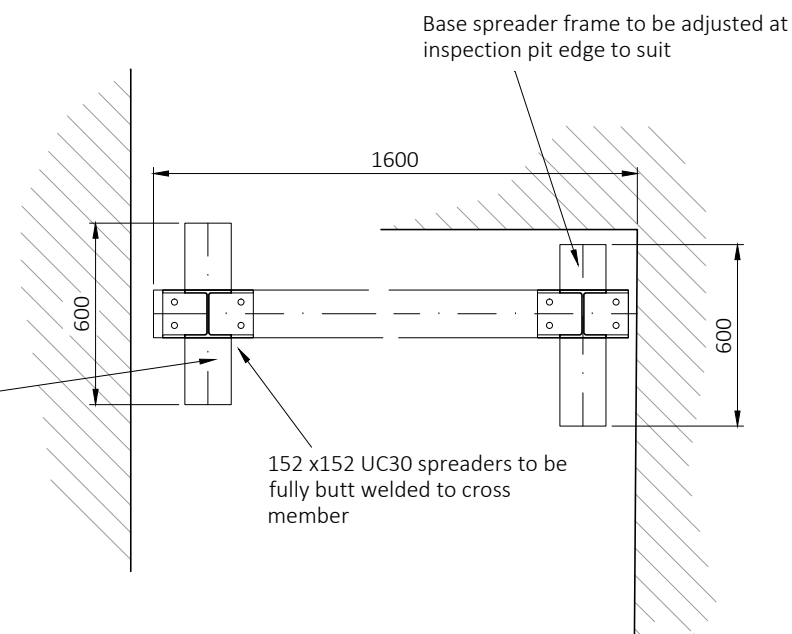


Longitudinal Section Existing Inspection Pit  
(Showing Fire Queen Support Steelwork)  
(1:25)



Typical Cross Section Existing Inspection Pit  
(Showing Fire Queen Support Steelwork)  
(1:25)



Plan on Spreader Frame to bottom of Inspection Pit  
(1:25)

#### NOTES - SEQUENCE OF WORK

1. All dimension to be checked prior to fabrication of steelwork. Fabrication drawings to be issued to design team for checking prior to fabrication.
2. Base of inspection pit and side walls to accept loads from end bearing or spreader plate to be inspected by the engineer for suitability prior to fabrication of steelwork.
3. All steelwork to be galvanised and painted in accordance with the Architects specification.
4. All bolts to be grade 8.8. All welds to be a minimum of 6mm fillet weld unless specified otherwise.
5. Supporting beams to be cast into lift pit walls and encased with concrete with this allowed to cure for a minimum of 14 days prior to loading.

Project		Padarn Country Park   Llanberis Fire Queen Shed		<div>TRP</div> <div>Consulting Engineers Ltd</div> <div>Tel: 07713 342522 email: mail@trpce.com</div>			
Title		Fire Queen Steelwork Support Frame to Rails					
Cad Rev		Scale 1:25 @A3					
		<div><div>0mm10203040</div></div>					
Date	Drawn	Checked	Approved	Project Ref.	Drg. No.	Rev.	
Mar 2025	TP			23035	FQ - 01		