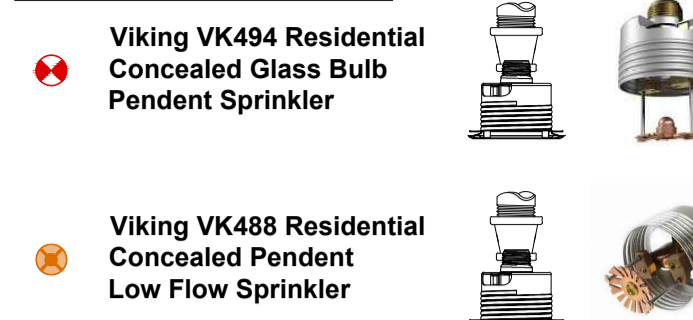


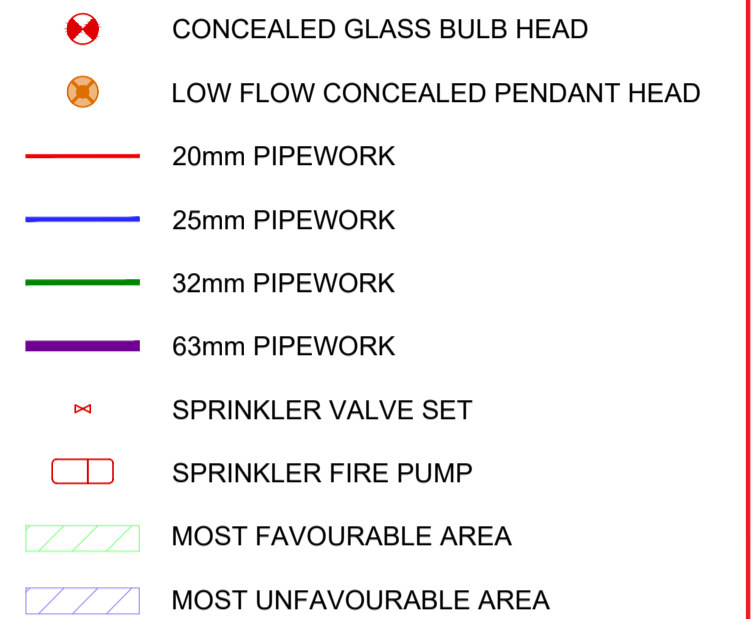
SPRINKLER LEGEND



Wall Opening:
2-5/8" (66 mm) Min.
3-3/4" (95 mm) Max.



Blazemaster CPVC pipe & fittings ASTM F442 Specification



SPRINKLER DESIGN INFORMATION

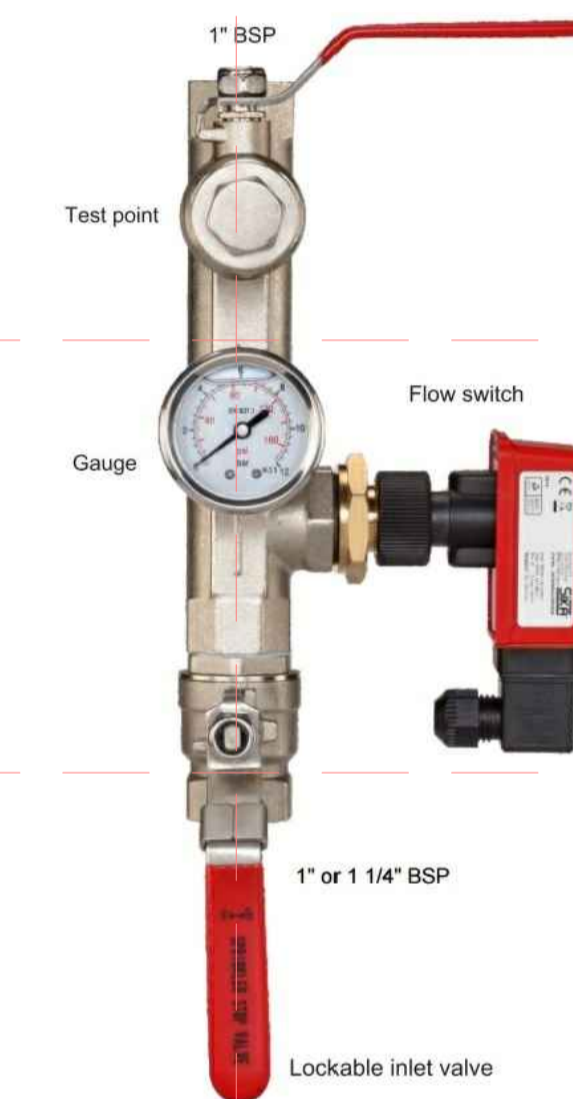
DESIGN SPECIFICATION:
FIRE SPRINKLER SYSTEM HAS BEEN DESIGNED TO BS9251:2014
VARIATIONS - N/A

HYDRAULIC DESIGN INFORMATION:
CATEGORY OF SYSTEM - 1
TYPE OF OCCUPANCY - INDIVIDUAL FLATS
NUMBER OF DESIGN SPRINKLERS - 2
DESIGN DENSITY - 2.04 MM/LIN
SPRINKLER K FACTOR - 3.0 & 4.9
MINIMUM FLOW RATE - 30.3 LPM & 49.2 LPM
MINIMUM PRESSURE - 0.49 BAR & 0.48 BAR
DESIGN SPACING - 3.7m x 3.7m & 4.9m x 4.9m

FHC DATA:
MOST UNFAVOURABLE - TBC
MOST FAVOURABLE - TBC

WATER STORAGE TANK INFORMATION:
REQUIRED EFFECTIVE CAPACITY - N/A
ACTUAL EFFECTIVE CAPACITY - N/A
TANK MANUFACTURER - N/A
TANK PART NUMBER - N/A
REDUCED CAPACITY TANK UTILISED - N/A
REQUIRED PROVEN RATE OF INFILL - N/A
ACTUAL PROVEN RATE OF INFILL - N/A
REDUNDANT PIPE/TANK FEED REQUIRED - N/A

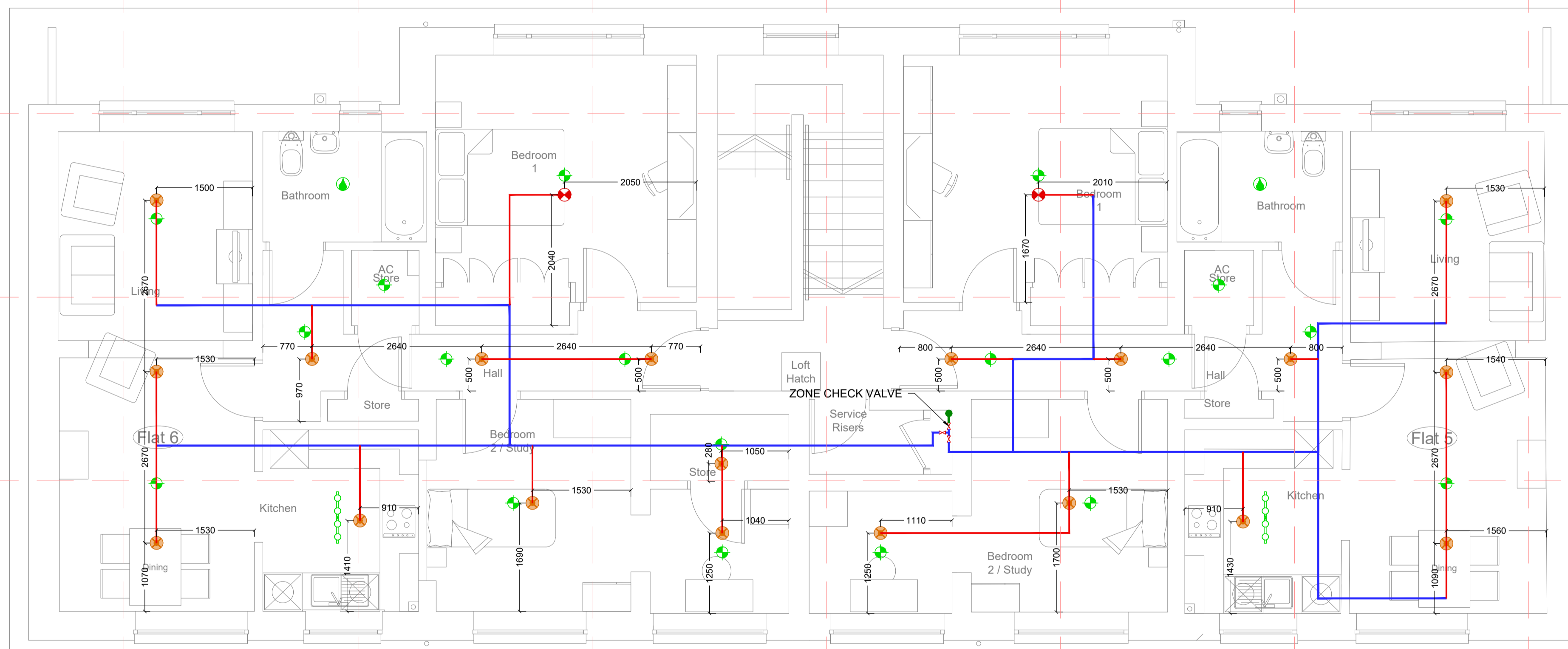
FIRE PUMP INFORMATION:
MANUFACTURER - GRUNDFOS
PUMP MODEL - TBC



SPRINKLER VALVE SET DETAIL

NOTES:

- CLIENTS ELECTRICIAN TO PROVIDE AN AICO E1129 SWITCH INTERFACE (OR SIMILAR COMPATIBLE) FROM THE HOUSE/APARTMENT INTERLINKED DETECTORS WIRED IN FP200 FIRE RESISTANT CABLE TO THE LOCATION OF AND WIRED INTO OUR SPRINKLER VALVE FLOW SWITCH. PLEASE REQUEST WIRING DIAGRAM.
- CLIENTS ELECTRICIAN TO PROVIDE A POWER SUPPLY TO OUR PUMP. THIS MUST BE A SEPARATE LOCKABLE BOARD WIRED ON THE SUPPLY SIDE OF THE DB (BETWEEN METER & NORMAL DB). A 20AMP CARTRIDGE TYPE FUSE MUST BE SUPPLIED (NO MCB'S/MCBO'S). THIS SHOULD BE WIRED IN 2.5mm FP200 OR SIMILAR TO A ROTARY ISOLATOR SITUATED CLOSE TO OUR PUMP. ROTARY ISOLATOR TO BE WIRED TO OUR PUMP CONTROLLER IN 2.5mm FP200 OR SIMILAR.
- CLIENTS ELECTRICIAN TO PROVIDE A SUITABLE POWER SUPPLY FOR OUR 1AMP PSU UNIT. THIS SHOULD THEN BE WIRED TO OUR SOLENOID VALVE (PDV) & OUR SPRINKLER VALVE SET IN 1.5mm FP200 OR SIMILAR. FPS TO SUPPLY PSU, BACK UP BATTERY & PDV UNIT.
- FPS WILL SUPPLY A SUITABLE SOLENOID VALVE (PDV) FOR INSTALLATION BY YOUR PLUMBER. THIS SHOULD BE INSTALLED ON THE NORMAL DOMESTIC FEED (ABOVE THE SPRINKLER BRANCH CONNECTION) (BUT BEFORE ANY DOMESTIC SERVICE CONNECTIONS)
- CLIENT FIRE ALARM INSTALLER SHOULD PROVIDE A SUITABLE FIRE ALARM INTERFACE AND CONNECT TO THE FLOW SWITCH ON EACH ZONE CHECK VALVE
- CLIENT FIRE ALARM INSTALLER SHOULD PROVIDE A SUITABLE FIRE ALARM INTERFACE/S AND CONNECT TO THE CONTROLLER ON OUR FIRE PUMP TO ACHIEVE A FIRE PUMP RUNNING & FAULT SIGNAL TO THE FIRE ALARM CONTROL PANEL.
- CLIENTS PLUMBER TO PROVIDE A BRANCH CONNECTION FROM THE INCOMING 63mm+ WATER SUPPLY IN 50mm+ MDPE. A SUITABLE FULL BORE/FULL WAY LOCKABLE ISOLATION VALVE SHOULD BE INSTALLED IMMEDIATELY AT THE BRANCH CONNECTION FOLLOWED BY A FULL FLOW WRAS APPROVED SINGLE CHECK VALVE AND DRAIN VALVE TERMINATED IN A 1 1/4" FEMALE BSP CONNECTION FOR OUR SPRINKLER FEED.



MAXIMUM WEIGHT LOADING AND SPACINGS FOR BLAZEMASTER PIPEWORK SEE BS 9251

NOMINAL BORE (mm)	OUTSIDE DIAMETER (mm)	WEIGHT / METRE (kg) - EMPTY	WEIGHT / METRE (kg) - CHARGED	MAXIMUM SUPPORT SPACING (m)
20	26.7	0.350	0.637	1.67
25	33.4	0.390	1.005	1.82
32	42.2	0.622	1.606	1.98
40	48.3	0.816	2.109	2.13
50	60.3	1.278	3.310	2.43
65	73.0	1.871	4.844	2.74
80	88.9	2.778	7.186	3.04

MAX SUPPORT SPACINGS DISTANCE IN LINE SPRINKLER HEAD DROP TEE

NOMINAL PIPE SIZE (mm)	<100PSI (m)	>100PSI (m)
20	0.91	1.22
25	1.52	1.52
32	1.83	1.52
40-80	2.13	2.13

MAX SUPPORT SPACING DISTANCE END SPRINKLER DROP ELBOW

NOMINAL PIPE SIZE (mm)	<100PSI (mm)	>100PSI (mm)
20	228.6	152.4
25	304.8	228.6
32	406.4	304.8
40-80	609.6	304.8

THE COPYRIGHT IN THIS DRAWING IS THE PROPERTY OF FIRE PROTECTION SERVICES IT MUST NOT BE REPRODUCED NOR AMENDED NOR USED FOR THE EXECUTION OF ANY WORKS WHETHER IN CONNECTION WITH THE PROPOSED WORKS FOR WHICH IT IS PREPARED OR OTHERWISE WITHOUT THE EXPRESS CONSENT IN WRITING OF FIRE PROTECTION SERVICES

PIPE WORK COMMISSIONING TESTS TO COMPLY WITH BS 5291.

SERVICES TO BE PROVIDED BY CLIENTS UNLESS OTHERWISE STATED: ALL BUILDERSWORK, HOLES THROUGH WALLS, FLOORS, SLEEVING, FIRE STOPPING, THRUST BLOCKS, TRENCHES, GROUTING & MAKING GOOD.

Rev	Date	Details	Chkd

Fire Protection Services Ltd
Unit 16, Oxwich Court
Enterprise Park
Swansea
SA6 8RA
01792 774085
www.fpsfire.co.uk

Fire Protection Services

Client

P.B.M. WALES LTD
BUILDING MAINTENANCE SPECIALISTS
www.pbmwales.co.uk

Drawing Status

WORKING DRAWING

Date	Scale	Drawn	Checked	Approved
09.01.2019	1:50 @A1	OCS/WW	TH	TH

Project Title

LLANSAWEL CRESCENT
BRITON FERRY

Drawing Title

SECOND FLOOR
SPRINKLER LAYOUT

Drawing Number	Rev
FPS-M-488	-